



International Journal of Physical and Social Sciences

(ISSN: 2249-5894)

CONTENTS

| Sr. No. | TITLE & NAME OF THE AUTHOR (S) | Page No. |
|-----------|--|----------------|
| <u>1</u> | Factors Influencing Marital Satisfaction among Postgraduate Students. HasleeSharil Abdullah, Lau Poh Li and Pauline Ng Ai Ai | <u>1-19</u> |
| <u>2</u> | Sustainability of Rural Water Supply Schemes In Oke-Ogun of Oyo State, NIGERIA. Toyobo Adigun Emmanuel, Tanimowo N. Bolanle and Muili A .B | <u>20-36</u> |
| <u>3</u> | Happiness Quotient of Upper Secondary School Students. HasleeSharil Abdullah, Poh Li, Lau and Sing Yee, Ong | <u>37-57</u> |
| <u>4</u> | Job Involvement among White Collar Employees. Dr. Mu. Subrahmanian | <u>58-74</u> |
| <u>5</u> | Socio-Economic Conditions of Agriculture Labourers In Punjab (Ground Reality of Unemployment). Parshotam D. Aggarwal | <u>75-87</u> |
| <u>6</u> | Family Management. K. Prabakar | <u>88-98</u> |
| <u>7</u> | FDI In Emerging Markets. Dr. Ratna Vadra | <u>99-117</u> |
| <u>8</u> | Hospitality And Tourism Industry. Robil Sahni and Esha Mehta | <u>118-142</u> |
| <u>9</u> | A New Proposal for Voltage Regulation Multi Feeders/ Multibus Systems Using MC-DVR. Vasudevanaidu and Dr. Basavaraja | <u>143-168</u> |
| <u>10</u> | Inclusive Growth: Vision And Challenges of An Emerging Economy –A case Study Of India. Dr. Snigdha Tripathy | <u>169-195</u> |
| <u>11</u> | Social Sector Revamp – A Need for Economic Growth. Dr. Vijay Kumar Mishra | <u>196-207</u> |
| <u>12</u> | Impact of Social Networking Sites on E-Commerce Business. Preeti Dhankar | <u>208-222</u> |
| <u>13</u> | Ansoff's strategic paradigm for MFIs sustainability in inclusive growth. Asha Antony .P | <u>223-236</u> |
| <u>14</u> | World Trade in Services: An Overview. Minu Singal | <u>237-264</u> |
| <u>15</u> | The Effects Of Joining To WTO on Non-Oil Export Of Iran. Seyed Mohammad Hossein Sadr and Mahdi Ahrari | <u>265-285</u> |

Chief Patron

Dr. JOSE G. VARGAS-HERNANDEZ

Member of the National System of Researchers, Mexico

Research professor at University Center of Economic and Managerial Sciences,
University of Guadalajara

Director of Mass Media at Ayuntamiento de Cd. Guzman

Ex. director of Centro de Capacitacion y Adiestramiento

Patron

Dr. Mohammad Reza Noruzi

PhD: Public Administration, Public Sector Policy Making Management,
Tarbiat Modarres University, Tehran, Iran

Faculty of Economics and Management, Tarbiat Modarres University, Tehran, Iran

Young Researchers' Club Member, Islamic Azad University, Bonab, Iran

Chief Advisors

Dr. NAGENDRA. S.

Senior Asst. Professor,

Department of MBA, Mangalore Institute of Technology and Engineering, Moodabidri

Dr. SUNIL KUMAR MISHRA

Associate Professor,

Dronacharya College of Engineering, Gurgaon, INDIA

Mr. GARRY TAN WEI HAN

Lecturer and Chairperson (Centre for Business and Management),

Department of Marketing, University Tunku Abdul Rahman, MALAYSIA

MS. R. KAVITHA

Assistant Professor,

Aloysius Institute of Management and Information, Mangalore, INDIA

Dr. A. JUSTIN DIRAVIAM

Assistant Professor,

Dept. of Computer Science and Engineering, Sardar Raja College of Engineering,
Alangulam Tirunelveli, TAMIL NADU, INDIA

Editorial Board

Dr. CRAIG E. REESE

Professor, School of Business, St. Thomas University, Miami Gardens

Dr. S. N. TAKALIKAR

Principal, St. Johns Institute of Engineering, PALGHAR (M.S.)

Dr. RAMPRATAP SINGH

Professor, Bangalore Institute of International Management, KARNATAKA

Dr. P. MALYADRI

Principal, Government Degree College, Osmania University, TANDUR

Dr. Y. LOKESWARA CHOUDARY

Asst. Professor Cum, SRM B-School, SRM University, CHENNAI

Prof. Dr. TEKI SURAYYA

Professor, Adikavi Nannaya University, ANDHRA PRADESH, INDIA

Dr. T. DULABABU

Principal, The Oxford College of Business Management, BANGALORE

Dr. A. ARUL LAWRENCE SELVAKUMAR

Professor, Adhiparasakthi Engineering College, MELMARAVATHUR, TN

Dr. S. D. SURYAWANSHI

Lecturer, College of Engineering Pune, SHIVAJINAGAR

Dr. S. KALIYAMOORTHY

Professor & Director, Alagappa Institute of Management, KARAIKUDI

Prof S. R. BADRINARAYAN

Sinhgad Institute for Management & Computer Applications, PUNE

Mr. GURSEL ILIPINAR

ESADE Business School, Department of Marketing, SPAIN

Mr. ZEESHAN AHMED

Software Research Eng, Department of Bioinformatics, GERMANY

Mr. SANJAY ASATI

Dept of ME, M. Patel Institute of Engg. & Tech., GONDIA(M.S.)

Mr. G. Y. KUDALE

N.M.D. College of Management and Research, GONDIA(M.S.)

Editorial Advisory Board

Dr. MANJIT DAS

Assistant Professor, Deptt. of Economics, M.C.College, ASSAM

Dr. ROLI PRADHAN

Maulana Azad National Institute of Technology, BHOPAL

Dr. N. KAVITHA

Assistant Professor, Department of Management, Mekelle University, ETHIOPIA

Prof C. M. MARAN

Assistant Professor (Senior), VIT Business School, TAMIL NADU

Dr. RAJIV KHOSLA

Associate Professor and Head, Chandigarh Business School, MOHALI

Dr. S. K. SINGH

Asst. Professor, R. D. Foundation Group of Institutions, MODINAGAR

Dr. (Mrs.) MANISHA N. PALIWAL

Associate Professor, Sinhgad Institute of Management, PUNE

Dr. (Mrs.) ARCHANA ARJUN GHATULE

Director, SPSPM, SKN Sinhgad Business School, MAHARASHTRA

Dr. NEELAM RANI DHANDA

Associate Professor, Department of Commerce, kuk, HARYANA

Dr. FARAH NAAZ GAURI

Associate Professor, Department of Commerce, Dr. Babasaheb Ambedkar Marathwada University, AURANGABAD

Prof. Dr. BADAR ALAM IQBAL

Associate Professor, Department of Commerce, Aligarh Muslim University, UP

Dr. CH. JAYASANKARAPRASAD

Assistant Professor, Dept. of Business Management, Krishna University, A. P., INDIA

Technical Advisors

Mr. Vishal Verma

Lecturer, Department of Computer Science, Ambala, INDIA

Mr. Ankit Jain

Department of Chemical Engineering, NIT Karnataka, Mangalore, INDIA

Associate Editors

Dr. SANJAY J. BHAYANI

Associate Professor, Department of Business Management, RAJKOT, INDIA

MOID UDDIN AHMAD

Assistant Professor, Jaipuria Institute of Management, NOIDA

Dr. SUNEEL ARORA

Assistant Professor, G D Goenka World Institute, Lancaster University, NEW DELHI

Mr. P. PRABHU

Assistant Professor, Alagappa University, KARAIKUDI

Mr. MANISH KUMAR

Assistant Professor, DBIT, Deptt. Of MBA, DEHRADUN

Mrs. BABITA VERMA

Assistant Professor, Bhilai Institute Of Technology, DURG

Ms. MONIKA BHATNAGAR

Assistant Professor, Technocrat Institute of Technology, BHOPAL

Ms. SUPRIYA RAHEJA

Assistant Professor, CSE Department of ITM University, GURGAON

Title

**A NEW PROPOSAL FOR VOLTAGE REGULATION
MULTI FEEDERS/MULTIBUS SYSTEMS USING MC-DVR**

Author(s)

VASUDEVANAIIDU

Asstt Prof.,

*Department of Electrical Engineering,
GJSAU University, Andhra Pradesh,
India-502329*

Dr. BASAVARAJA

Professor.,

*Department of Electrical Engineering,
GJSAU University, Andhra Pradesh,
India-502329*

ABSTRACT:

A Monthly Double-Blind Peer Reviewed Refereed Open Access International e-Journal - Included in the International Serial Directories
Indexed & Listed at: Ulrich's Periodicals Directory ©, U.S.A., Open J-Gate, India as well as in Cabell's Directories of Publishing Opportunities, U.S.A.

International Journal of Physical and Social Sciences
<http://www.ijmra.us>

This paper presents a new voltage regulation system multi converter dynamic voltage restorer (MC-DVR), capable of simultaneous compensation for voltage in Multibus/multifeeder systems. In this configuration two voltage-source converters (VSC) exist. The system can be applied to adjacent feeders to compensate for supply-voltage on the main feeder and full compensation of supply- voltage imperfections on the other feeders. In the proposed configuration, all converters are connected back to back on the dc side and share a common dc-link capacitor. Therefore, power can be transferred from one feeder to adjacent feeders to compensate for sag. The performance of the MC-DVR as well as the adopted control algorithm is illustrated by simulation. The results obtained in MATLAB/SIMULINK on a two-bus/two-feeder system show the effectiveness of the proposed configuration.

Keywords: Power quality, Distribution feeder, Custom power device, MC-DVR, Voltage sag, VSC, DVR.

1. INTRODUCTION:

Power quality is certainly a major concern in the present era; it becomes especially important with the introduction of sophisticated devices, whose performance is very sensitive to the quality of power supply. Modern industrial processes are based on a large amount of electronic devices such as programmable logic controllers and adjustable speed drives. The electronic devices are very sensitive to disturbances [1] and thus industrial loads become less tolerant to power quality problems such as voltage dips, voltage sags, and harmonics.

In order to meet PQ standard limits, it may be necessary to include some sort of compensation. Modern solutions can be found in the form of active rectification or active filtering [2]. A shunt active power filter is suitable for the suppression of negative load influence on the supply network, but if there are supply voltage imperfections, a series active power filter

In recent years, solutions based on flexible ac transmission systems (FACTS) have appeared. The application of FACTS concepts in distribution systems has resulted in a new gene Power quality is certainly a major concern in the present era; it becomes especially important with the introduction of sophisticated devices, whose performance is very sensitive to the quality of

power supply. Modern industrial processes are based on a large amount of electronic devices such as programmable logic controllers and adjustable speed drives. The electronic devices are very sensitive to disturbances [1] and thus industrial loads become less tolerant to power quality problems such as voltage dips, voltage sags, and harmonics.

In order to meet PQ standard limits, it may be necessary to include some sort of compensation. Modern solutions can be found in the form of active rectification or active filtering [2]. A shunt active power filter is suitable for the suppression of negative load influence on the supply network, but if there are supply voltage imperfections, a series active power filter

In recent years, solutions based on flexible ac transmission systems (FACTS) have appeared. The application of FACTS concepts in distribution systems has resulted in a new generation of compensating devices. Custom power devices which are based on the voltage source converter (VSC) are mainly used for active filtering; load balancing, power factor correction and voltage regulation in distribution systems. The devices such as distribution static compensator (DSTATCOM), the dynamic voltage restorer (DVR) and the unified power quality conditioner (UPQC) have already been discussed extensively in [3-6]. A DSTATCOM is connected in shunt with the distribution feeder to protect the utility from the ration of compensating devices. Custom power devices which are based on the voltage source converter (VSC) are mainly used for active filtering; load balancing, power factor correction and voltage regulation in distribution systems. The devices such as distribution static compensator (DSTATCOM), the dynamic voltage restorer (DVR) and the unified power quality conditioner (UPQC) have already been discussed extensively in [3-6]. A DSTATCOM is connected in shunt with the distribution feeder to protect the utility from the ill effects of the loads and a DVR is connected in series to protect a sensitive load from disturbances in the source. A UPQC combines the functions of the DSTATCOM and the DVR in one unit, backed by common dc energy storage e.g,

This paper explores the operating principles and control characteristics of the MC-DVR. It will be demonstrated that bi-directional power flow between the two feeders is possible. This can be accomplished by supplying power from one feeder to the other load (and vice versa) through the common dc capacitor. A new bus voltage angle control strategy [9] has been proposed such that the voltage across the common dc capacitor remains constant. The limits of achievable performance of the MC-DVR have been computed. The performance of the MC-DVR has been evaluated through simulation studies using MATLAB/SIMULINK.

2. **SYSTEM REPRESENTATION:**

The most usual application of a DVR is to protect sensitive loads from the effects voltage dips. A dip is usually taken as an event lasting less than one minute while the voltage decreases to between 0.1 and 0.9p.u. A DVR consists of a VSC placed in series with the load (via an injection transformer for higher voltages), which is controlled to inject a voltage in series with a depleted supply voltage to maintain the load voltage at a constant value. The DVR is a powerful controller that is commonly used for voltage sags mitigation at the point of connection. The DVR employs the same blocks as the D-STATCOM; but in this application the coupling transformer is connected in series with the ac system. The VSC generates a three-phase ac output voltage which is controllable in phase and magnitude. These voltages are injected into the ac distribution system in order to maintain the load voltage at the desired voltage reference.

The converter generates the reactive power needed while the active power is taken from the energy storage. The energy storage can be different depending on the needs of compensating. The DVR often has limitations on the depth and duration of the voltage dip that it can compensate. Therefore right sized has to be used in order to achieve the desired protection. Options available for energy storage during voltage dips are conventional capacitors for very short durations but deep, batteries for longer but less severe magnitude drops and super capacitors in between. There are also other combinations and configurations possible. There are configurations, which can work without any energy storage, and they inject a lagging voltage with the load current. There are also different approaches on what to inject to obtain the most powerful solution. The main advantage with this method is that a single DVR can be installed to protect the whole plant (a few MVA) as well as single loads. Because of the fast switches,

usually IGBT's, voltage compensation can be achieved in less than half a cycle [10]. Disadvantages are that it is relatively expensive and it only mitigates voltage dips from outside the site. The cost of a DVR mainly depends on the power rating and the energy storage capacity. The MC-DVR indicated in Fig. 1 consists of two shunt VSCs (VSC-1 and VSC-2) that are connected back to back through a common energy storage dc capacitor C_{dc} . Each of the VSCs is realized by three level inverters. The complete structure of a three-phase MC-DVR with two such VSCs is shown in Fig. 2.

The VSCs are connected in shunt with PCC buses B-1 and B-2. The output of each three level inverter is connected to a single-phase transformer. One of the secondary terminals of each transformer is connected in shunt with the respective phase of the PCC bus. The other terminals of the secondary windings of each transformer are connected to the common load neutral N . The ac filter capacitors C_{F1} and C_{F2} are also connected at the PCC in each phase to prevent the flow of the harmonic currents into the distribution system generated due to switching. The VSCs are operated such that each of the PCC bus voltages are regulated. In Fig.3 represents the single line diagram of a DVR

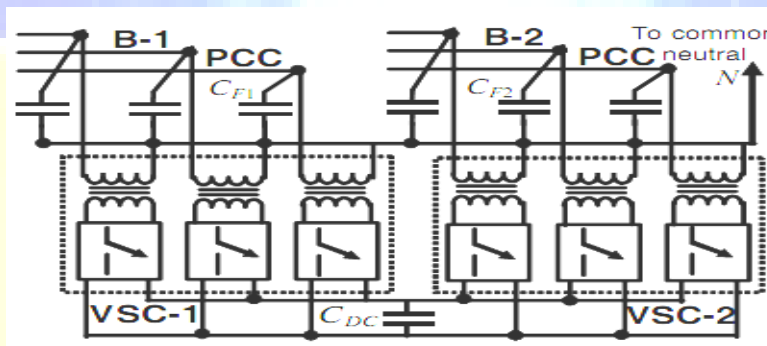


Fig. 2. The complete structure of an MC-DVR.

The circuit on left hand side of the DVR represents the Thevenin equivalent circuit of the system. The system impedance Z_{th} depends on the fault level of the load bus. When the system voltage (V_{th}) drops, the DVR injects a series voltage V_{DVR} through the injection transformer so that the desired load voltage magnitude V_L can be maintained [11].

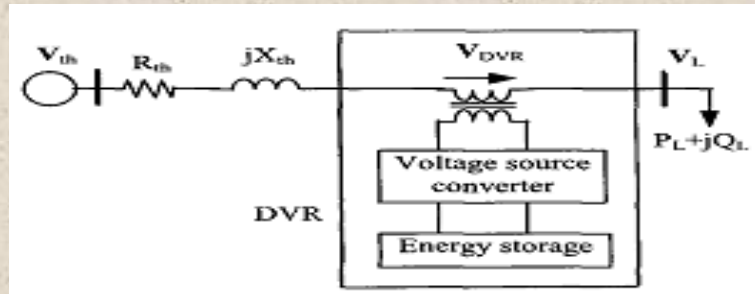


Fig. 3. The Schematic diagram of a Single Bus DVR

The series injected voltage of the DVR can be written as,

$$V_{DVR} = V_{TH} + Z_{TH} I_L - V_L \quad (1)$$

V_L is the desired load voltage magnitude

V_{TH} is the system voltage during fault condition

Z_{TH} is the load impedance

I_L is the load current

The load current (I_L) given by

$$I_L = \left(\frac{P+jQ}{V_L} \right)^* \quad (2)$$

When V_L is considered as a reference, eqn. (1) can be rewritten as,

$$V_{DVR} \angle \delta = V_L \angle 0 + Z_{TH} I_L \angle (\beta - \theta) - V_{TH} \angle \delta \quad (3)$$

Here α , β and δ are the angle of V_{DVR} , Z_{TH} and V_{TH} respectively, and θ is load power factor angle,

$$\theta = \tan^{-1}(P/Q).$$

The complex power injection of the DVR can be written as,

$$S_{DVR} = V_{DVR} I_L^* \quad (4)$$

It may be mentioned here that when the injected voltage V_{DVR} is kept in quadrature with I_L , no active power by the DVR required correcting the voltage. It requires the injection of only reactive power and the DVR itself is capable of generating the reactive power. Note that DVR can be kept in quadrature with I_L only up to a certain value of voltage sag and beyond which the quadrature relationship cannot be maintained to correct the voltage sag. For such a case, injection of active power into the system is essential. The injected active power must be provided by the energy storage system of the DVR.

3. Control Strategy:

The aim of the control scheme is to maintain constant voltage magnitude at the point where a sensitive load is connected, under system disturbances. The control system only measures the rms voltage at the load point, i.e., no reactive power measurements are required. The VSC switching strategy is based on a sinusoidal PWM technique which offers simplicity and good response. Since custom power is a relatively low-power application, PWM methods offer a more flexible option than the Fundamental Frequency Switching (FFS) methods favored in FACTS applications. Besides, high switching frequencies can be used to improve on the efficiency of the converter, without incurring significant switching losses.

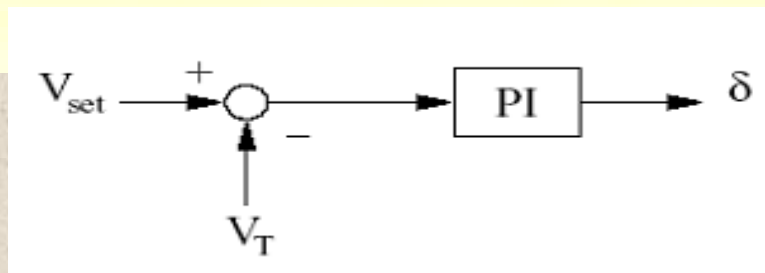


Fig. 4. Indirect Controller

In fig .4 shows that the controller input is an error signal obtained from the reference voltage and the value rms of the terminal voltage measured. Such error is processed by a PI controller and the output is the angle δ , which is provided to the PWM signal generator. It is important to note that in this case, indirectly controlled converter, there is active and reactive power exchange with the network simultaneously: an error signal is obtained by comparing the reference voltage with the rms voltage measured at the load point. The PIcontroller process the error signal and generates the required angle to drive the error to zero, i.e., the load rms voltage is brought back to the reference voltage.

The sinusoidal signal $V_{CONTROL}$ is phase-modulated by means of the angle δ .

i.e.

$$V_A = \sin(\omega t + \delta)$$

$$V_B = \sin(\omega t + \delta - 120^\circ)$$

$$V_C = \sin(\omega t + \delta + 120^\circ) \quad (5)$$

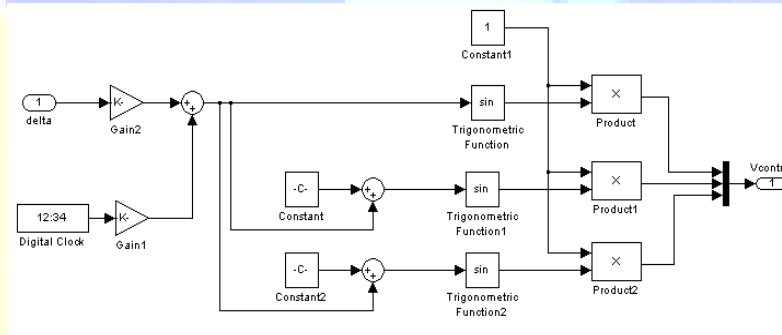
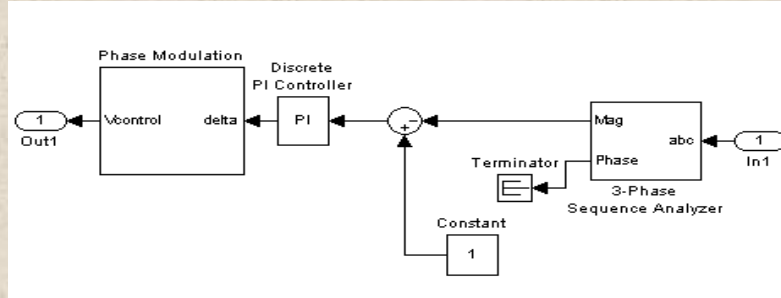


Fig. 5. The sinusoidal signal $V_{CONTROL}$

The modulated signal $V_{CONTROL}$ is compared against a triangular signal (carrier) in order to generate the switching signals for the VSC valves. The main parameters of the sinusoidal PWM scheme are the amplitude modulation index of signal, and the frequency modulation index of the triangular signal. The amplitude index is kept fixed at 1 p.u, in order to obtain the highest fundamental voltage component at the controller output.



Where

$V_{CONTROL}$ is the peak amplitude of the control signal V_{TRI} is the peak amplitude of the triangular signal the switching frequency is set at 450 Hz. The frequency modulation index is given by;

$$M_a = \frac{V_{CONTROL}}{V_{TRI}} = 1 \text{ p.u}$$

$$M_f = \frac{f_x}{f_1} = 9 \quad (6)$$

Where f_1 is fundamental frequency

The modulating angle is applied to the PWM generators in phase A. The angles for phases B and C are shifted by 240° and 120° respectively. It can be seen in that the control implementation is kept very simple by using only voltage measurements as the feedback variable in the control scheme. The speed of response and robustness of the control scheme are clearly shown in the simulation results. The Simulink block diagram of SPWM generator is as shown in fig.6

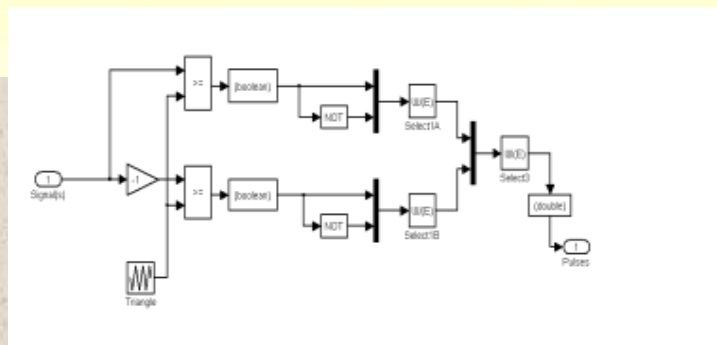


Fig.6.The Simulink block diagram of SPWM generator

4. **SYSTEM MODELING:**

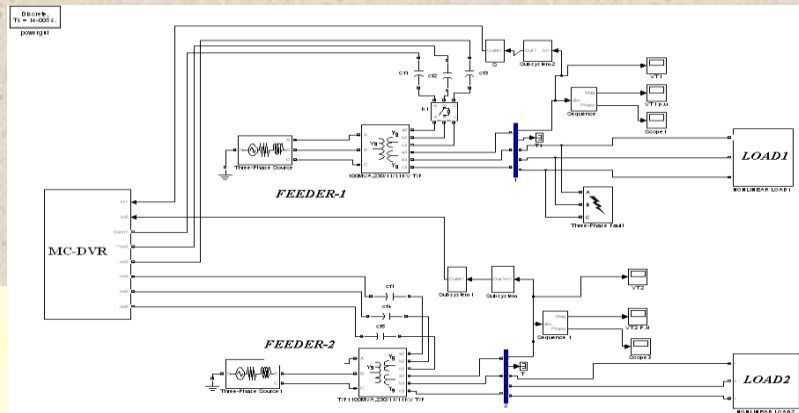


Fig.7.The Simulink block diagram of MC-DVR connected distribution system

With respect of Fig. 7, the feeder impedances are denoted by the pairs (R_1, L_1) and (R_2, L_2) . The aim of the MC-DVR is to regulate the PCC bus voltages V_{T1} and V_{T2} to a prespecified magnitude against voltage sag/swell and/or disturbances in the system. The distribution system parameters used in the study are given in Table I.

TABLE I

| System Parameters | Values |
|--------------------------|--|
| System frequency (f) | 60HZ |
| Rated voltage | 230KV |
| Voltage source v_{S1} | 230KV,Phase angle 0^0 |
| Voltage source v_{S2} | 230KV,Phase angle 0^0 |
| Feeder-1 | $0.1+j0.758\Omega$ |
| Feeder-2 | $0.1+j0.758\Omega$ |
| Load-1 | A three-phase diode bridge rectifier with an resistor (500) Ω |
| Load-2 | A three-phase diode bridge rectifier with an resistor (500) Ω |

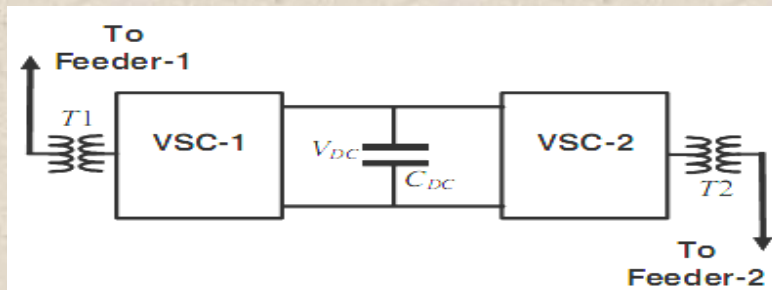


Fig.8.The Schematic diagram of MC-DVR

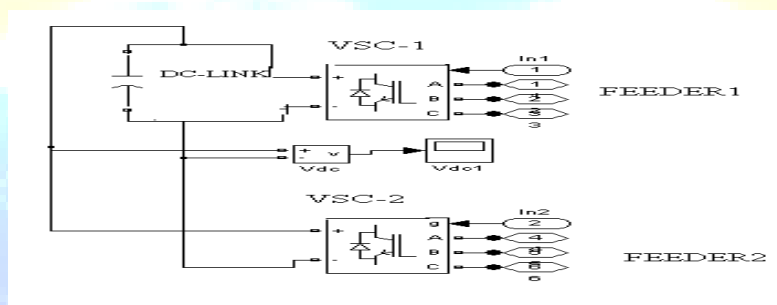


Fig.9.The Simulink converters block diagram of MC-DVR

MC-DVR PARAMETERS

TABLE II

| System Parameters | Values |
|--|---|
| System frequency (f) | 60HZ |
| VSC-1 single-phase transformers ($T1$) | 100MVA,230KV/11KV, 2% resistance and 8% leakage Reactance |
| VSC-2 single-phase transformers ($T2$) | 100MVA,230KV/11KV, 2% resistance and 8% leakage Reactance |

5. **SIMULATION RESULTS:**

A three-phase four-wire distribution system behavior without MC-DVR has been shown in fig. 10. The three-phase PCC bus voltages, V_{T1} , V_{T2} and load currents I_{L1} and I_{L2} of the loads L_1 and L_2 respectively shown in below fig. 7.

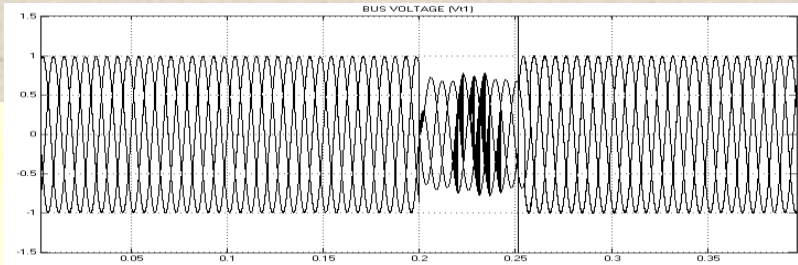


Fig. 10a. The three-phase PCC bus voltage, V_{T1}

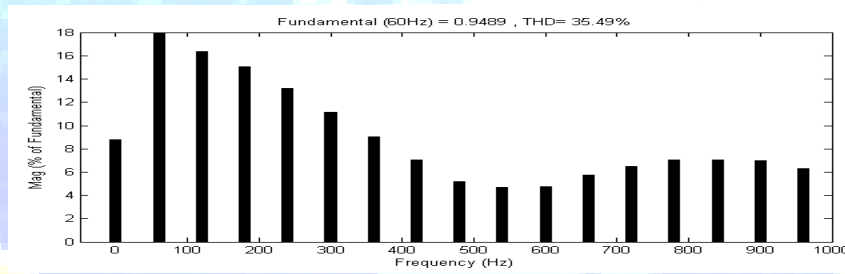


Fig. 10b. Total Harmonic Distortions(THD) at feeder1

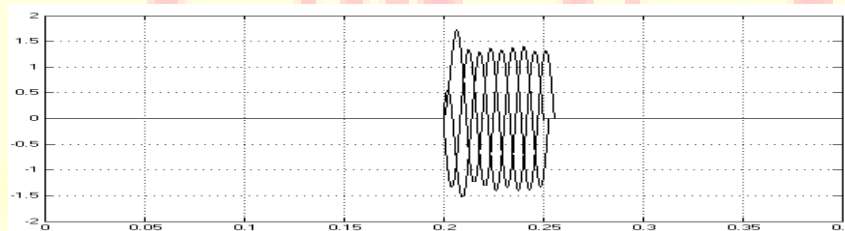


Fig. 10c. The three-phase Load Current, I_{L1}

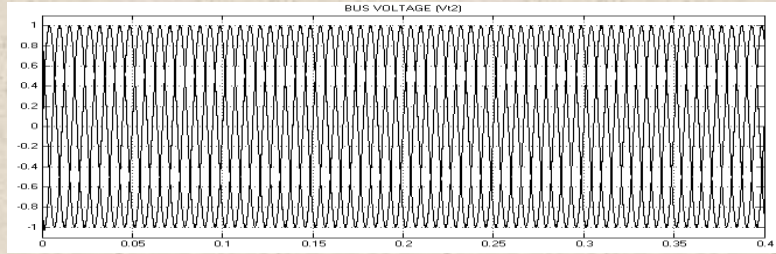


Fig. 10d. The three-phase PCC bus voltage, V_{T2}

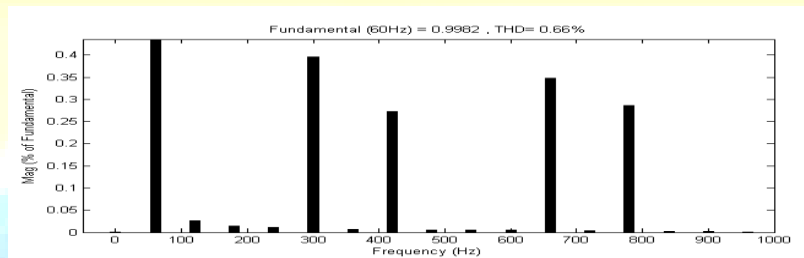


Fig. 10.d. Total Harmonic Distortions(THD) at feeder2

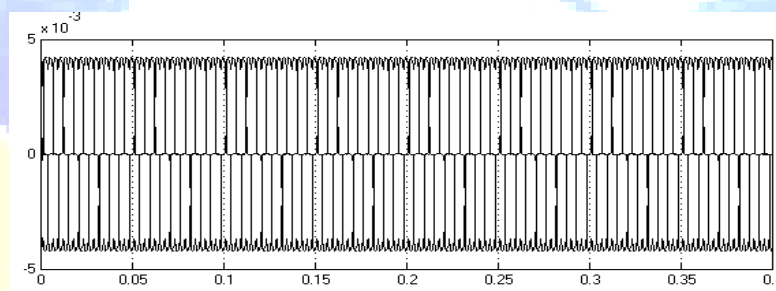


Fig. 10e. The three-phase Load Current, I_{L2}

A three-phase four-wire distribution system behavior with MC-DVR, The aim of the MC-DVR is to regulate the two voltages, V_{T1} , and V_{T2} to their reference magnitudes V_{REF1} and V_{REF2} respectively.

Case A: Voltage Sag in Feeder-1

With the system operating in the steady state the *Feeder-1* is subjected to deep voltage sag at 0.2s-0.25s(50ms) in which the supply voltage is reduced 60% nominal voltage and THD is 35.49% the system voltages in fig.10.a and 10.b

The voltage sag in *Feeder-1* limits its ability to supply the required power to the load L-1 and as a result of the control action, additional power is routed by the MC-DVR from *Feeder-2* into the load L-1 and THD in feeder is 0.11%. It should be observed from Fig.12 and Table III.

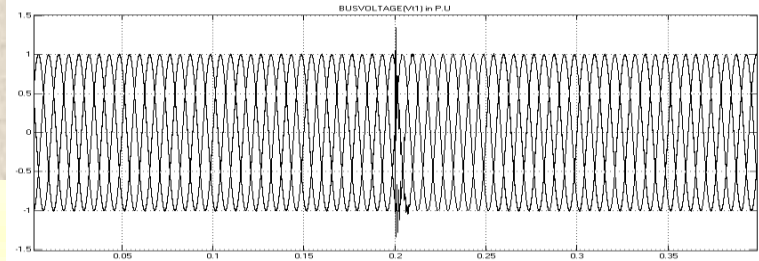


Fig.12a The three-phase PCC bus voltage, V_{T1} with MC-DVR

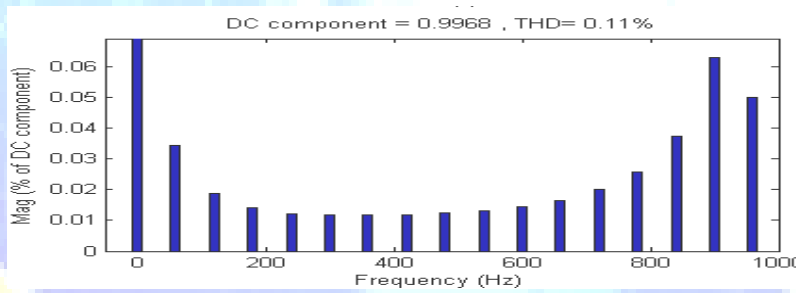


Fig.12b. Total Harmonic Distortions at feeder1 with MC-DVR

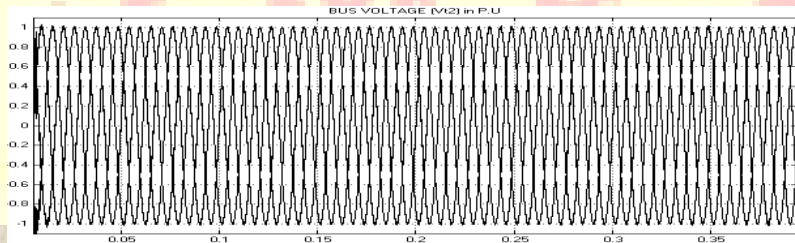


Fig. 12.c. The three-phase PCC bus voltage, V_{T2} with MC-DVR

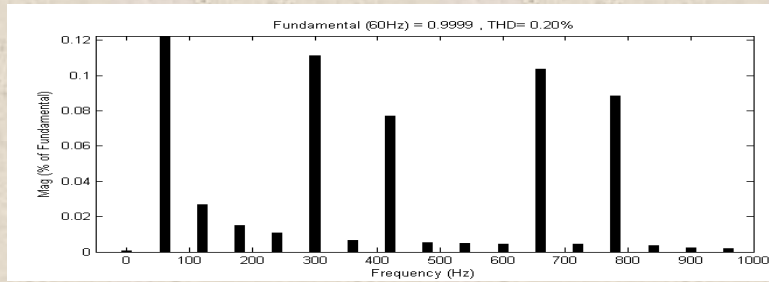


Fig.12.d. Total Harmonic Distortions (THD) at feeder2 with MC-DVR

III. RESULT TABLE

| System observations | % THD | Bus Voltages In P.U |
|---------------------------------|-------|---------------------|
| Without Controller Feeder -1 | 35.49 | 0.761 |
| With Controller Feeder-1 | 0.11 | 0.999 |
| Without Controller Feeder -2 | 0.66 | 1.000 |
| With Controller Feeder -2 | 0.20 | 1.001 |

Similar simulation studies have been performed in case of a deep voltage sag in *Feeder-2*

Case B: Voltage Sag in Feeder-2

With the system operating in the steady state, the *Feeder-2* is subjected to deep voltage sag at 0.15s-0.2s(50ms) in which the supply voltage is reduced 42% nominal voltage and THD 37.03%.The system voltages in fig.13.a and 13.b

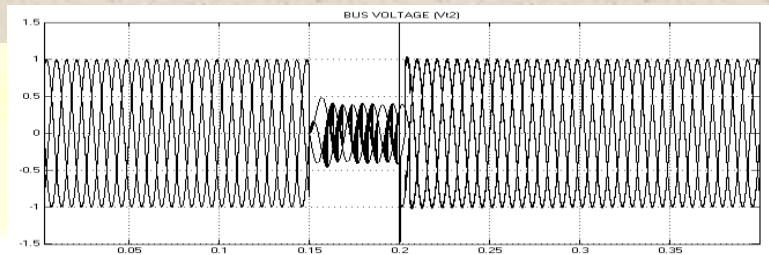


Fig.13.a The three-phase PCC bus voltage, V_{T2} without MC-DVR

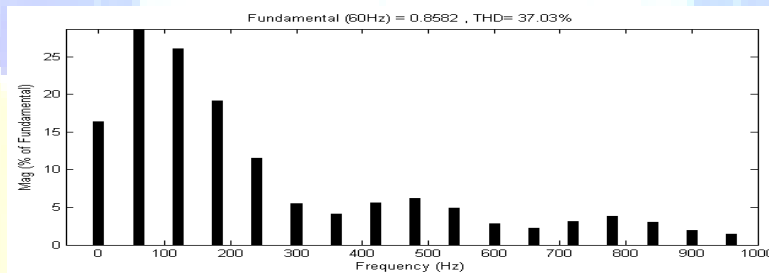


Fig. 13.b. Total Harmonic Distortions (THD) at feeder2

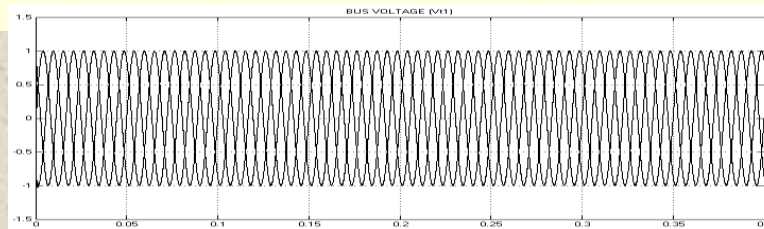


Fig.13c.The three-phase PCC bus voltage at, V_{T1} without MC-DVR

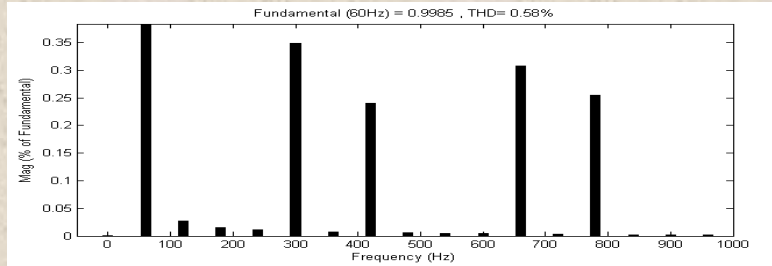


Fig. 13.d. Total Harmonic Distortions (THD) at feeder 1

The voltage sag in Feeder-2 limits its ability to supply the required power to the load L-2. And as a result of the control action, additional power is routed by the MC-DVR from Feeder-2 into the load L-1 and THD is 2.45%. It should be observed from Fig. 14 and Table IV

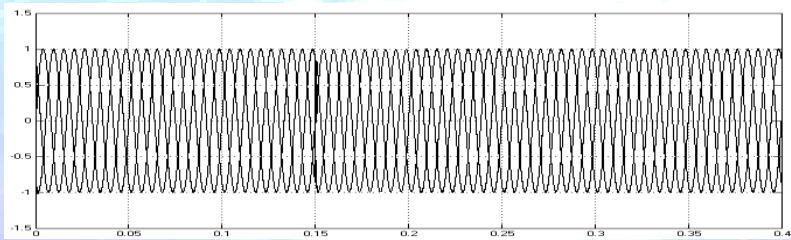


Fig.14a. The three-phase PCC bus voltage, V_{T2} with MC-DVR

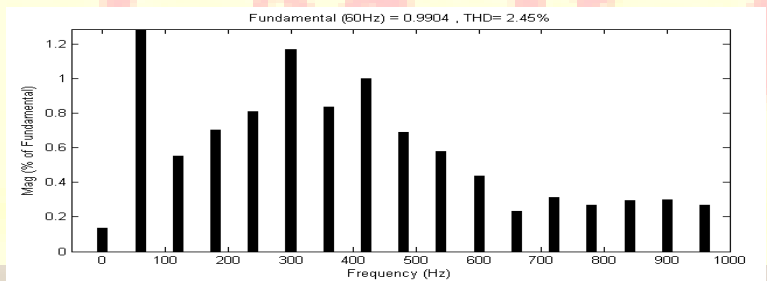


Fig.14a. Total Harmonic Distortions at feeder2 with MC-DVR

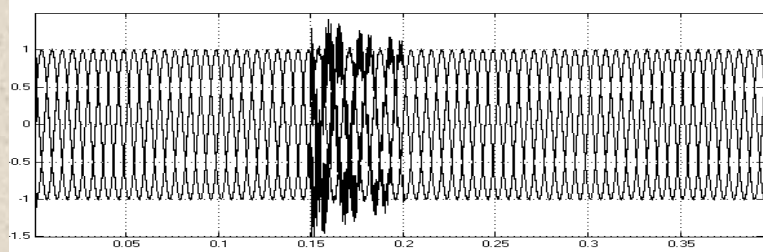


Fig.13.c. the three-phase PCC bus voltage at, V_{T1} with MC-DVR

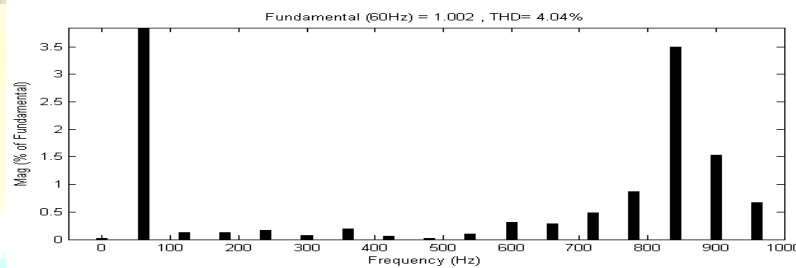


Fig.13.d. Total Harmonic Distortions (THD) at feeder2 with MC-DVR

CASE-B TEST RESULT

TABLE IV

| System observations | % THD | Bus Voltages In P.U |
|---------------------------------|-------|---------------------|
| Without Controller Feeder -1 | 37.03 | 0.621 |
| With Controller Feeder-1 | 2.45 | 0.994 |
| Without Controller Feeder -2 | 0.66 | 1.000 |
| With Controller Feeder -2 | 0.20 | 1.002 |

6. CONCLUSIONS:

The paper presents voltage regulation in parallel distribution feeders by using multi converter dynamic voltage restorer (MC-DVR). The MC-DVR is connected in shunt between two parallel feeders coming from different substations. Two non-linear loads L-1 and L-2 are supplied by the two feeders. The phase angles of the PCC bus voltages are obtained such that the voltage across the dc link remains constant. The performance of the MC-DVR has been evaluated under the disturbance conditions such as voltage sags in either feeder. It has been demonstrated that bi-directional power flow between the two feeders is possible. This can be accomplished by supplying power from one feeder in case of deep voltage sag in the other feeder and vice versa.

REFERENCES:

- N.G. Hingorani “Introducing custom power,” *IEEE spectrum*, vol.32, June 1995, pp. 41-48.
- Ray Arnold “Solutions to Power Quality Problems” *power engineering Journal*, Volume 15; Issue: 2 April 2001, pp: 65-73.
- John Stones and Alan Collison “Introduction to Power Quality” *power engineering journal*, Volume 15; Issue 2, April 2001, pp: 58-64.
- Anaya-Lara, .; Acha, E.” Modeling and analysis of custom over systems by PSCAD/EMTDC”, *IEEE Transactions on Power Delivery*, Volume: 17, Issue: 1, Jan. 2002 pp: 266 – 272.
- Po-Tai Cheng; Chian-Chung Huang; Chun-Chiang Pan; Bhattacharya, S.” Design and implementation of a series voltage sag compensator Under practical utility conditions” *IEEE Transactions on Industry Applications*, Volume: 39 , Issue: 3 , May-June 2003
- Soo-Young Jung; Tae-Hyun Kim; Seung-Il Moon; Byung- Moon Han;” Analysis and control of DSTATCOM for a line voltage regulation” Power Engineering Society Winter Meeting, 2002. IEEE, Volume: 2, 27-31 Jan. 2002, pp: 729 – 734
- Bollen, M.H.J.” Voltage sags in three-phase systems” *Power engineering Review*, IEEE, Volume: 21, Issue: 9, Sept. 2001, pp: 8- 11, 15.
- Hague, M.H.” Compensation of distribution system voltage sag By DVR and D-STATCOM”, *IEEE Porto Power Tech Conference*, Volume: 1, 10th-13th Sept. 2001.

- L. Gyugyi, K. K. Sen and C. D. Schauder, "The interline power Flow controller concept: a new approach to power flow management in transmission system," *IEEE Trans. Power Deliv.*, Vol. 14, No. 3, pp. 1115- 1123, 1999.
- A.K. Jindal, A. Ghosh and A. Joshi, "Interline Unified Power Quality Conditioner," *IEEE Trans. Power Delivery*, Vol. 22, No. 1, pp. 364-372, Jan. 2007.
- A.K. Jindal, A. Ghosh and A. Joshi, "Power quality improvement Using interline voltage controller," *Proc. IET Genre. Transm. Distrib.*, Vol. 1, No. 2, pp. 287-293, March 2007.

